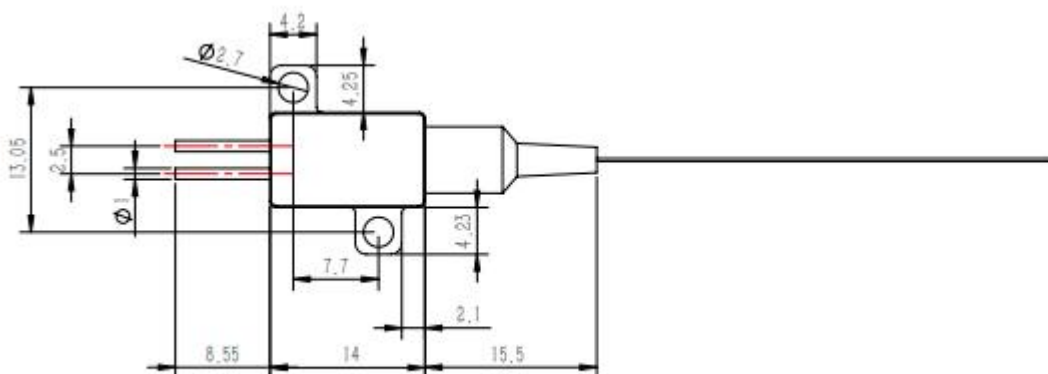
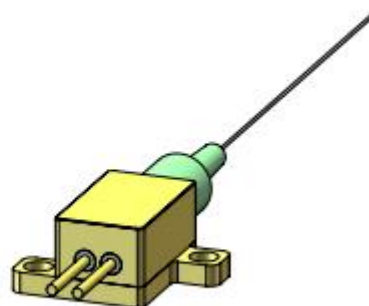
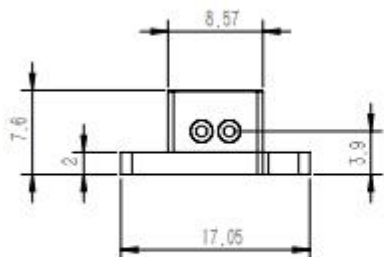


# 915nm/15W Multi-Mode Pigtailed Laser

## Dimensions



### Features:

- High output power
- Excellent beam quality
- High reliability

### Applications:

- Laser display
- Laser engraving
- Laser illumination

# 915nm/15W Multi-Mode Pigtailed Laser

## Specifications

Parameters	Min.	Typical	Max.	Test Conditions
<b>Optical Properties</b>				
Center Wavelength	910nm	915nm	918nm	At Po = 15W & Tcase = 25°C
Output Power ( <b>Pop</b> )		15W	17W	At Tcase = 25°C, Iop = 12A
Operating Temperature ( <b>Tcase</b> )	-10°C	25°C	45°C	Using a base with good heat dissipation.
<b>Electrical Properties</b>				
Threshold Current ( <b>Ith</b> )		1		
Operating Current ( <b>Iop</b> )		18A	22A	At Po = 15W & Tcase = 25°C
Operating Voltage ( <b>Vop</b> )		2.2 V	2.8V	At Po = 15W & Tcase = 25°C
Reverse Breakdown Voltage ( <b>VR</b> )		0.8V		
<b>Fiber Type</b>				
Numerical Aperture (NA)		0.22		
Fiber Model	220/220			Customizable
Fiber Length	>1.0 m			Customizable
Ferrule Specifications	0.9 black loose tube			Customizable
Output Connector	Bare fiber or FC/APC			Customizable
<b>Storage Conditions</b>				
Storage Humidity	5% ~ 85% RH			No condensation
Storage Temperature	-20 ~ 60°C			No condensation